

ENDANGERED SPECIES

Specimens or parts of animals and plants, and products obtained from them (e.g. ivory, skins/hides and shells), protected under the Convention on International Trade in Endangered Species (CITES) are controlled. For further information, please contact:

The Global Wildlife Division of Defra on +44 (0) 117 372 8749 (between 09:00 hrs – 17:00 hrs Mon-Fri)

PLANTS OR PLANT PRODUCTS



There are restrictions on bringing plant and plant products into the UK from outside the EU. Many items are controlled, including potatoes, soil and some fruit, vegetables, plants and bulbs. Please check the rules in the plant 'If in doubt, leave it out!' leaflet. For further information, please contact: The Plant Health Service Delivery Unit of Defra on +44 (0) 1904 455174 (between 08:00 hrs – 17:00 hrs Mon-Fri)

WHY ARE THERE STRICT CONTROLS?

Meat, food and plants can carry animal/plant pests and diseases, which can devastate our environment and our agricultural and horticultural industries.

The 2001 Foot and Mouth (FMD) outbreak demonstrated the costly impact of animal and plant disease on rural communities, businesses and the economy.



THEREFORE THERE ARE STRICT CONTROLS ON THE IMPORTATION OF PLANTS AND PLANT PRODUCTS INTO THE UK FROM OUTSIDE THE EU. CUSTOMS WILL SEEK TO PROSECUTE SERIOUS OFFENDERS. MAKE SURE YOU CHECK WHAT YOU CAN BRING INTO THE UK.

HOW CAN I CHECK THE RULES?

This leaflet gives you a summary of the rules. It is not fully comprehensive. Pest and disease outbreaks can occur at any time and these rules are subject to amendment without notice. Remember, what you can bring into the UK depends on where you are travelling from, not where the item has been produced or packaged. If you are in any doubt about what you can or cannot bring into the UK you should contact:

FOR FISH, SHELLFISH AND THEIR PRODUCTS (SPECIFIC INFORMATION):

The Food Standards Agency on +44 (0) 20 7276 8000 (between 09:00 hrs – 17:00 hrs Mon-Fri)

FOR ALL OTHER PRODUCTS:

The Department for Environment, Food and Rural Affairs (Defra) helpline (between 09:00 hrs – 17:00 hrs Mon-Fri):

From the UK: 08459 335577

From outside the UK: +44 (0) 20 7238 6951

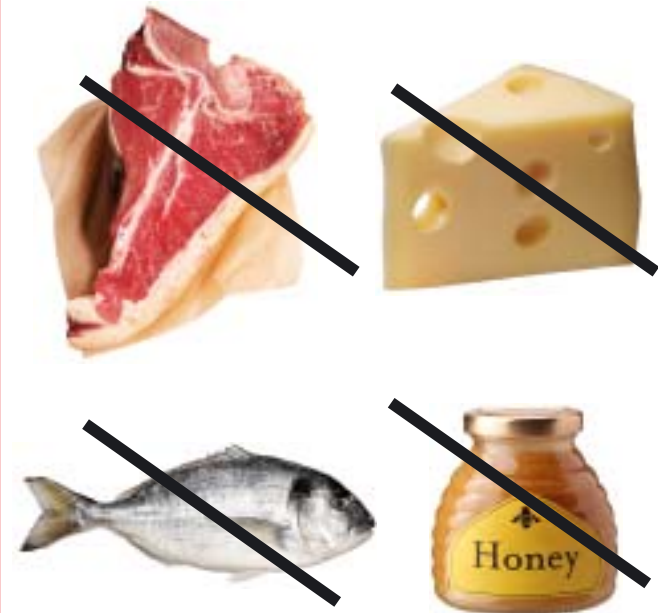
Or check Defra's website: www.defra.gov.uk

For all other allowances information please refer to 'Notice 1 – A Customs Guide for Travellers Entering the UK'.

THERE ARE STRICT PENALTIES FOR SMUGGLING PROHIBITED AND RESTRICTED ITEMS. THIS CAN INCLUDE UNLIMITED FINES, THE POSSIBILITY OF IMPRISONMENT, OR BOTH.

IF YOU ARE CARRYING PROHIBITED OR RESTRICTED ITEMS, OR ARE SIMPLY UNSURE OF THE RULES, GO TO THE CUSTOMS RED CHANNEL/POINT OR THE PHONE PROVIDED AT THE RED POINT TO SPEAK TO A CUSTOMS OFFICER. ALL PROHIBITED AND RESTRICTED ITEMS WILL BE SEIZED AND DESTROYED.

IF IN DOUBT, LEAVE IT OUT!



TRAVELLING TO THE UK? THINKING OF BRINGING MEAT OR FOOD INTO THE UK? THESE ITEMS MAY CARRY DISEASES AND STRICT PENALTIES APPLY. MANY ITEMS ARE PROHIBITED AND WILL BE SEIZED. CHECK THE RULES BEFORE YOU BRING ANY OF THESE ITEMS INTO THE UK.

(see page 3)

EU COUNTRIES INCLUDE:

Austria, Belgium, Republic of Cyprus†, Czech Republic, Denmark, Estonia, Finland, France, Germany, Greece, Hungary, the Irish Republic, Italy, Latvia, Lithuania, Luxembourg, Malta, the Netherlands, Poland, Portugal (including Madeira), Slovakia, Slovenia, Spain, Sweden and the UK.

Andorra, the Canary Islands, the Channel Islands, the Isle of Man, Norway and San Marino are also treated as part of the EU for these purposes.

(see page 4)

OTHER EUROPEAN COUNTRIES ARE:

The Faroe Islands, Greenland, Iceland, Liechtenstein and Switzerland.

If the country is not listed here and is not in the EU, the restrictions detailed on page 5 apply.

ALL TRAVELLERS MAY BRING IN A LIMITED QUANTITY OF POWDERED INFANT MILK, INFANT FOOD AND SPECIAL FOODS REQUIRED FOR MEDICAL REASONS IN PERSONAL BAGGAGE. ITEMS MUST NOT REQUIRE REFRIGERATION BEFORE OPENING AND MUST BE IN COMMERCIAL BRAND PACKAGING, UNOPENED UNLESS IN CURRENT USE.

YOU MAY BRING IN UP TO 1KG PER PERSON OF CERTAIN NON-MEAT/DAIRY PRODUCTS FROM SOME COUNTRIES (page 4 and 5 refer). IF YOU EXCEED THIS, THE WHOLE AMOUNT WILL BE SEIZED.

† Though the whole of Cyprus is part of the EU, goods from any area of Cyprus not under effective control of the Government of the Republic of Cyprus are treated as non-EU imports.

– FOOD MUST BE FOR YOUR PERSONAL CONSUMPTION –

TRAVELLING FROM THE EUROPEAN UNION

WHAT CAN I BRING IN FROM THE EU?

If you are entering the UK from another EU country (see page 2 for list of included countries), you may bring in the following items as long as they are free from disease (these items may also be sent in by post):

	MEAT AND MEAT PRODUCTS OBTAINED IN THE EU	✓
	MILK AND DAIRY PRODUCTS OBTAINED IN THE EU	✓
	OTHER ANIMAL PRODUCTS (eg FISH, SHELLFISH, HONEY, EGGS) OBTAINED IN THE EU	✓

WHAT AM I NOT PERMITTED TO BRING IN FROM THE EU?

If you are entering the UK from another EU country (see page 2 for list of included countries), restrictions apply on the following items:

	ANY OF THE ITEMS ABOVE IF THEY COULD BE DISEASED	✗
	UNPASTEURISED MILK AND ITS PRODUCTS	✗

– FOOD MUST BE FOR YOUR PERSONAL CONSUMPTION –

TRAVELLING FROM SOME OTHER EUROPEAN COUNTRIES

WHAT CAN I BRING IN?

If you are travelling in from the Faroe Islands, Greenland, Iceland, Liechtenstein or Switzerland, you may bring in/send by post to the UK the following items as long as they are free from disease:

	MEAT, MEAT PRODUCTS, MILK AND DAIRY PRODUCTS OBTAINED FROM THOSE COUNTRIES WITH A COMBINED TOTAL WEIGHT OF NOT MORE THAN 5KG PER PERSON	5KG MAX
	1KG EACH OF OTHER ANIMAL PRODUCTS PER PERSON (eg FISH, SHELLFISH, HONEY, EGGS) IS PERMITTED FROM CERTAIN COUNTRIES*	1KG

*The rules vary by product and country. If you wish to bring/send in by post any of these items please contact the helplines on page 8.

WHAT AM I NOT ALLOWED TO BRING IN FROM OTHER EUROPEAN COUNTRIES?

If you are entering the UK from one of the above countries, restrictions apply on the following items:

	ANY OF THE ITEMS ABOVE IF THEY COULD BE DISEASED	✗
	UNPASTEURISED MILK AND ITS PRODUCTS	✗

There are strict rules on plant and plant products. Please contact the helpline on page 6.

– FOOD MUST BE FOR YOUR PERSONAL CONSUMPTION –

TRAVELLING FROM ALL OTHER COUNTRIES

WHAT CAN I BRING IN FROM ALL OTHER COUNTRIES?

From any other country, you may bring in/send by post to the UK the following items as long as they are free from disease:

	1KG EACH OF OTHER ANIMAL PRODUCTS PER PERSON (eg FISH, SHELLFISH, HONEY, EGGS) IS PERMITTED FROM CERTAIN COUNTRIES*	1KG
---	---	-----

*The rules vary by product and country. Please contact the helplines on page 8.

WHAT AM I NOT PERMITTED TO BRING IN FROM ALL OTHER COUNTRIES?

From any other country, you may not bring in/send by post to the UK any of the following items:

	ANY OF THE ITEMS ABOVE IF THEY COULD BE DISEASED	✗
	MEAT AND MEAT PRODUCTS	✗
	MILK AND ALL DAIRY PRODUCTS	✗

There are strict rules on plant and plant products. Please contact the helpline on page 6.